



Sage Estimating

Advanced Assembly Databases

Turbo-charge your takeoffs with prebuilt, trade-specific cost databases.

The Advanced Assembly Databases offer a complete range of cost databases for use with Sage Estimating—ensuring you put your best bid forward faster. These databases can produce Unit-Price, Man-Hour, or Turn-Key estimates for any trade. They ensure precise calculations and costs across all aspects of the bid, including: labor, subcontractor bids, materials, equipment, and overhead. Choose an individual database that is fitting for your particular trade or need. The following Advanced Assembly Databases are available:

- **Commercial**—for wood, steel, and concrete commercial construction.
- **Residential**—for wood-framed residential construction.
- **Site Development**—for excavation, underground utilities, paving, and retaining walls.
- **Concrete and Masonry**—for masonry and concrete foundations, slabs, walls, columns, elevated decks, site concrete, and demolition.
- **Composite**—includes over 125 assemblies and 60,000 items and all databases above to meet the most diverse construction needs.

Let Sage Estimating do the heavy lifting for you.

Each of the Advanced Assembly Databases can be used literally out of the box with minimal updating required. Sage Estimating paired with an Advanced Assembly Database guides you through the assembly takeoff process allowing you to quickly populate your bid worksheet, all while instantly calculating costs.

For more information on how Sage Estimating, along with an Advanced Assembly database can help you put your best bid forward faster, visit: www.SageEstimating.com or call **800-628-6583**.

Benefits

Ready to go, out of the box with little or no modifications required

Comprehensive assemblies with thousands of detailed cost items

Contains current manufacturer pricing for items

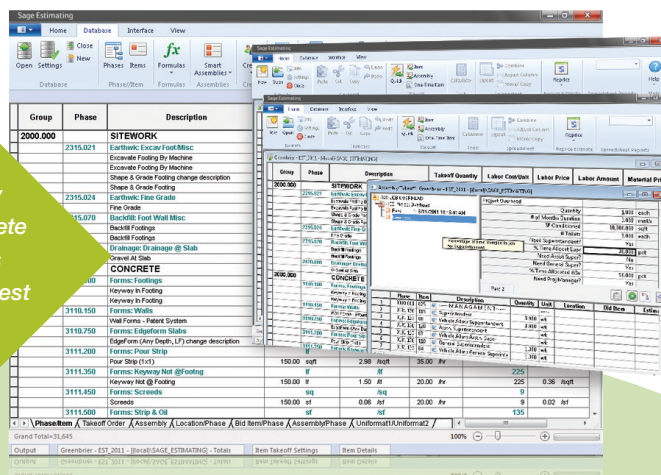
Assemblies are built to support both "man-hour" and "unit pricing"

Estimates both self-performed and subcontract work

Produces detailed takeoff quantities and a bill of materials for soliciting vendor quotes and ordering materials

Helps prepare and streamline bid solicitation, buyout, project scheduling, and AIA billing

The Advanced Assembly Databases offer a complete range of cost databases that help you put your best bid forward faster.



Sage Estimating

Advanced Assembly Databases

CP Composite
 CL Commercial
 R Residential
 CM Concrete and Masonry
 SD Site Development

		CP	CL	R	CM	SD
SetUp Assemblies	052 Default Labor Takeoff Method	●	●	●	●	●
	053 Default Specifications	●	●	●	●	●
	054 Lump Sum Bids—Residential	●		●		
	054 Lump Sum Bids—Commercial	●	●			
	058 Material Quotes	●	●	●		
	059 Allowances	●		●		
Job Overhead	103 Mobilization	●	●	●	●	●
	105 Project Overhead	●	●	●	●	●
	110 Project Close-Out	●	●	●		
	125 Equipment: General (rental)	●	●	●	●	●
	125 Equipment: General (yard)	●	●		●	●
	127 Equipment: Hoisting	●	●			
Foundation	302 Footing—Continuous/Strip	●	●	●	●	
	303 Footing—Isolated/Pad	●	●	●	●	
	304 Footing—Grade Beam	●	●	●	●	
	305 Footing—Pile Cap	●	●		●	
	307 Footing—Pier	●	●		●	
	306 Footing—Piling and Caisson	●	●		●	
	315 Elevator Pit	●	●		●	
Slab-On-Grade	362 Slab-on-Grade	●	●	●	●	
	364 Slab-on-Grade Basement	●		●	●	
Elevated Deck	370 Elevated Deck—Concrete (cast in place)	●	●		●	
	380 Elevated Deck—Hollow Core	●	●		●	
	382 Elevated Deck—Bar Joist	●	●		●	
	384 Elevated Deck—Metal Framed	●	●			
	385 Elevated Deck—Wood Framed	●	●	●		
	388 Exterior Wood Deck (exposed to weather)	●		●		

Sage Estimating

Advanced Assembly Databases

CP CL R CM SD

Sloped Roof

391	Roof—Wood Framed Dormer	●		●		
392	Roof—Wood Rafter	●	●	●		
395	Roof—Wood Trusses	●	●	●		
396	Roof—Metal Trusses	●	●			
398	Roof—Steel Frame and Purlin	●	●			
398	Roof—Projection (mansard/canopy)	●	●			

Wall

410	Wall—Stem (CMU)	●	●	●	●	
411	Wall—Stem (concrete)	●	●	●	●	
412	Wall—CMU (exterior)	●	●	●	●	
414	Wall—CMU (interior)	●	●		●	
420	Wall—Wood Framed (exterior)	●	●	●		
422	Wall—Wood Framed (interior)	●	●	●		
424	Wall—Wood Framed Bay-Window	●		●		
435	Wall—Metal Framed (exterior)	●	●			
436	Wall—Metal Framed (interior)	●	●			
440	Wall—Concrete (cast-in-place)	●	●	●	●	
442	Wall—Concrete (tilt-up)	●	●		●	
443	Wall—Curtain	●	●			

Doors, Windows, and Glass Openings

445	Opening—Fixed Glass and Storefront	●	●			
446	Opening—Windows	●	●	●		
447	Opening—Interior Doors	●	●	●		
448	Opening—Exterior Doors	●	●	●		
449	Opening—Overhead Doors	●	●	●		

Columns and Chases

452	Column—Wood, Plastic, CMU, Steel, Precast	●	●	●		
453	Column—Steel	●	●			
455	Column—Framed Chase	●	●			
460	Column—Cast-in-Place Concrete (round)	●	●	●	●	
462	Column—Cast-in-Place Concrete (square)	●	●		●	

Beams

501	Beams—Wood	●		●		
502	Beams—Concrete	●	●		●	
503	Beams—Steel	●	●			

Sage Estimating

Advanced Assembly Databases

CP CL R CM SD

Stairs and Railing

660	Stairs—Wood Framed (interior)	●	●	●		
662	Stairs—Wood Framed (exterior)	●				
670	Stairs—Metal Pan Filled	●	●			●
680	Stairs—Cast-in-Place Concrete	●	●			●
682	Stairs—Concrete (precast)	●	●			●

Interior Finishes

692	Ceilings (residential)	●	●			●
692	Ceilings (commercial)	●	●	●		
693	Cabinets and Countertop (residential)	●	●			●
693	Cabinets and Countertop (commercial)	●	●	●		
694	Flooring	●	●	●		●
695	Wall Finish (residential)	●	●			●
695	Wall Finish (commercial)	●		●		
697	Shelving and Built-in	●	●			●
698	Specialties (residential)	●	●			●
698	Specialties (commercial)	●	●	●		
699	Fireplace and Chimney	●	●			●

Exterior Finishes

726	Entry and Stoop	●		●		
727	Patio, Courtyard, and Terrace	●		●		
728	Summer Kitchen	●		●		
730	Framed Covered Porch	●		●		
732	Balcony	●		●		
740	Wood Deck on Grade	●		●		

Equipment

802	Appliances (residential)	●		●		
802	Appliances (commercial)	●	●			
810	Equipment (residential)	●		●		
810	Equipment (commercial)	●	●			
830	Elevator and Lift	●	●			

HVAC, Electrical, Plumbing

851	Fire Alarm	●	●			
887	Fire Sprinkler	●	●			
889	Gas Lines	●	●	●		
890	HVAC System	●	●	●		
892	Plumbing (residential)	●		●		
892	Plumbing (commercial)	●	●			
896	Electrical (residential)	●		●		
896	Electrical (commercial)	●	●			
898	Utility Services	●	●	●		

Sage Estimating

Advanced Assembly Databases

CP CL R CM SD

Site Development

902	Site Clearing and Prep	●	●	●		●
904	Excavation—Site	●	●	●		●
904	Excavation—Building	●				●
916	Excavation—Trench Only	●				●
917	Utilities—Storm Drainage	●				●
918	Utilities—Sanitary Sewer	●				●
920	Utilities—Water	●				●
921	Utilities—Fire Water Lines	●				●
922	Paving—Curb and Gutters	●			●	●
925	Paving—Drives and Parking	●	●	●	●	●
927	Paving—Sidewalks	●			●	●
928	Site—Handicap Ramp	●				●
930	Site—Irrigation	●		●		●
932	Site—Landscaping	●		●		●
936	Site—Improvements	●				●
940	Site—Pool	●		●		
942	Site—Fencing	●				●
944	Site Walls—Retaining	●			●	●
946	Site Walls—CMU	●			●	●

Demolition and Remodel

953	Demo—Sitework	●				
954	Demo—Structural	●				
955	Demo—Interior	●				
957	Demo—Exterior	●				
957	Relocate Mechanical, Plumbing, Electrical	●				

Special Estimates

962	Estimate—Conceptual	●	●			
964	Estimate—Model Homes	●		●		
966	Estimate—Unit Price	●	●	●		

Shell Buildings

971	Shell—Manufactured Metal Building	●				
972	Shell—Laminated Arch	●				
974	Shell—Structural Steel Frame	●				
976	Shell—Cast-in-Place Concrete	●			●	

Total Assemblies

125 75 62 38 26

Sage Construction and Real Estate

15195 NW Greenbrier Parkway | Beaverton, OR 97006 | 8006286583 | www.SageCRE.com

